



WHEELSETS | STEMS | HANDLEBARS | SEATPOSTS

PACO®
2017

ABOUT **PACO**®

With a long corporate philosophy of service, quality, innovation, and constantly improving service system, **PACO**® aims to develop products with the best value, function, and the highest quality and performance. But more than that, we combine our amazing product line with excellent service before and after sales. We strive to continually update our product line with the latest product offering better performance and ever improving quality at a fair price. You can have full confidence that we will meet your requests and fulfill your bicycling product requirements in a professional manner.

***“WE ARE COMMITTED TO PROVIDING AMAZING PRODUCT VALUE
AND QUALITY. CUSTOMER SATISFACTION ABOVE ALL ELSE”***





CONTENTS

WHEEL SETS ROAD	4
WHEEL SETS MTB	8
HANDLEBARS ROAD	11
HANDLEBARS MTB	14
STEMS CARBON FIBER	18
STEMS ALUMINUM	20
SEATPOSTS CARBON FIBER	24
SEATPOSTS ALUMINUM	26
HEADSETS ALUMINUM	28
SEATPOST CLAMPS ALUMINUM	30
BOTTLE CAGES CARBON FIBER	34
BOTTLE CAGES ALUMINUM	36
DERAILLEUR PULLEYS ALUMINUM	38

WHEEL SETS

ROAD

OUR HIGH-END CARBON AND ALLOY WHEEL SETS FOR ROAD BIKES ARE AVAILABLE IN DIFFERENT DEPTHS, LACING AND PARTS SPECIFICATIONS

We use only the best available branded and reputable parts sourced from different parts of the world. Unlike other brands, we do not play up certain aspects of the wheels while skimping on quality or function. If you look carefully, you will see that each of our carbon fiber and aluminum road wheels are carefully designed with specifications that matches or exceeds those found in more well-known brands, but at a price that is a lot more reasonable.

WH-R50X CL/TU

ROAD RIDING / ROAD RACING

**700C (ETRTO: 622mm)
CLINCHER CARBON FIBER**

DEPTH

50mm / Width: 21mm

HUB

Straight pull hub, 6 pawls
6061 Aluminum

BEARINGS

6 sealed

Optional: Ceramic bearings

COMPATIBILITY

Shimano 11S, SRAM 11S,
Campagnolo 11S

SPOKES

F: 20 / R: 24, Sapim CX-RAY,
Straight pull, black

NIPPLES

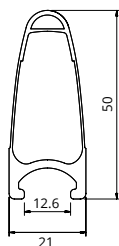
Sapim 14mm nipples

LACING

F: radial / R: 2 cross & radial

WEIGHT

1673 grams
(Front: 750 g / Rear: 923 g)



WH-R38X CL/TU

ROAD RIDING / ROAD RACING

700C (ETRTO: 622mm)
CLINCHER CARBON FIBER

DEPTH

38mm / Width: 21mm

HUB

Straight pull hub, 6 pawls
6061 Aluminum

BEARINGS

6 sealed

Optional: Ceramic bearings

COMPATIBILITY

Shimano 11S, SRAM 11S,
Campagnolo 11S

SPOKES

F: 20 / R: 24, Sapim CX-RAY,
Straight pull, black

NIPPLES

Sapim 14mm nipples

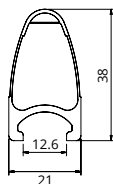
LACING

F: radial / R: 2 cross & radial

WEIGHT

1575 grams

(Front: 695 g / Rear: 880 g)



WH-SLR C50

ROAD RIDING / ROAD RACING

700C (ETRTO: 622mm)
CLINCHER CARBON FIBER

DEPTH

50mm / Width: 21mm

HUB

Straight pull hub, 3 pawls
6061 Aluminum

BEARINGS

6 sealed

Optional: Ceramic bearings

COMPATIBILITY

Shimano 11S, SRAM 11S,
Campagnolo 11S

SPOKES

F: 20 / R: 24, Sapim CX-RAY,
Straight pull, black

NIPPLES

Sapim 14mm

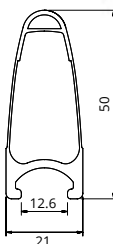
LACING

F: radial / R: 2 cross & radial

WEIGHT

1606 grams

(Front: 736 g / Rear: 870 g)



WH-SLR C38

ROAD RIDING / ROAD RACING

700C (ETRTO: 622mm)
CLINCHER CARBON FIBER

DEPTH

38mm / Width: 21mm

HUB

Straight pull hub, 3 pawls
6061 Aluminum

BEARINGS

6 sealed

Optional: Ceramic bearings

COMPATIBILITY

Shimano 11S, SRAM 11S,
Campagnolo 11S

SPOKES

F: 20 / R: 24, Sapim CX-RAY,
Straight pull, black

NIPPLES

Sapim 14mm

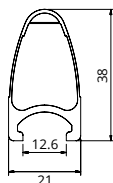
LACING

F: radial / R: 2 cross & radial

WEIGHT

1502 grams

(Front: 683 g / Rear: 819 g)



WH-700PRO+

ROAD RIDING / ROAD RACING

700C (ETRTO: 622mm)
CLINCHER SUPER LITE ALLOY

DEPTH

30mm

HUB

Straight pull hub, 6 pawls
6061 Aluminum

BEARINGS

6 sealed

Optional: Ceramic bearings

COMPATIBILITY

Shimano 11S, SRAM 11S,
Campagnolo 11S

SPOKES

F: 20 / R: 24, Stainless aero,
Straight pull, black

NIPPLES

14mm alloy nipples

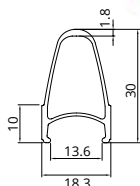
LACING

F: radial / R: 2 cross & radial

WEIGHT

1648 grams

(Front: 722 g / Rear: 926 g)



WH-SLA203

ROAD RIDING / ROAD RACING

700C (ETRTO: 622mm)
CLINCHER ALUMINUM

DEPTH

F: 22mm / Width: 18.2mm

R: 30mm / Width: 18.3mm

HUB

Straight pull hub, 6 pawls
6061 Aluminum

BEARINGS

6 sealed

Optional: Ceramic bearings

COMPATIBILITY

Shimano 11S, SRAM 11S,
Campagnolo 11S

SPOKES

F: 20 / R: 24, Stainless Aero

NIPPLES

14mm alloy

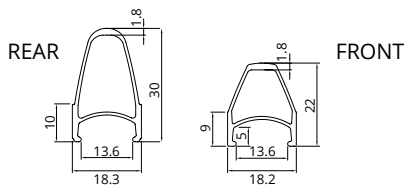
LACING

F: radial / R: 2 drive & radial

WEIGHT

1419 grams

(Front: 576 g / Rear: 843 g)



WH-SLA308

ROAD RIDING / ROAD RACING

700C (ETRTO: 622mm)
CLINCHER ALUMINUM

DEPTH

F: 30mm / Width: 18.3mm

R: 38mm / Width: 20mm

HUB

Straight pull hub, 6 pawls
6061 Aluminum

BEARINGS

6 sealed

Optional: Ceramic bearings

COMPATIBILITY

Shimano 11S, SRAM 11S,
Campagnolo 11S

SPOKES

F: 20 / R: 24, Stainless Aero

NIPPLES

14mm alloy

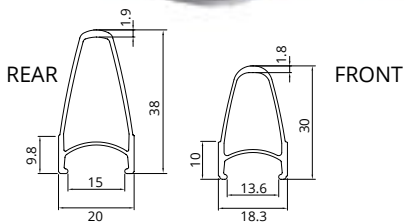
LACING

F: radial / R: 2 drive & radial

WEIGHT

1565 grams

(Front: 659 g / Rear: 906 g)



WHEEL SETS

MTB

JUST LIKE OUR ROAD BICYCLE WHEELS, OUR MTB WHEELS COME IN A WHOLE LOT OF DIFFERENT VARIETIES TO SUIT YOUR NEEDS

We have an extensive line-up of high-performance MTB wheels. Each wheel set is designed, engineered and manufactured to withstand the roughest and harshest conditions of long-distance cross-country riding. Like its road siblings these MTB wheels are carefully specified and hand-made to the strictest quality control standards and tolerances, assuring you of problem-free riding.

WH-27.5 RACE

MTB XC

27.5 INCH (ETRTO: 584mm)
TUBELESS-READY ALUMINUM
ALUMINUM CLINCHER W/O EYELETS

DEPTH

17.5mm / Width: 25mm

HUB

Straight pull hub, 3 pawls
6061 Aluminum

AXLE

F: 2 in 1 (QR 15mm)
R: 3 in 1 (QR 135mm,
M12 135mm / 142mm)

COMPATIBILITY

Shimano 11S, SRAM 11S,
Exchangeable: SRAM XX1

SPOKES

F: 24 / R: 24,
Sapim CX-Delta

NIPPLES

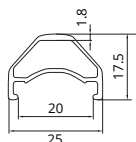
Sapim alloy

LACING

F: Aero (2X) /
R: Aero (2X drive / 2X)

WEIGHT

1443 grams
(Front: 649 g / Rear: 794 g)



WH-27.5 PRO

MTB XC

27.5 INCH (ETRTO: 584mm)
TUBELESS-READY ALUMINUM
CLINCHER WITH EYELETS

DEPTH

22mm / Width: 26mm

HUB

Straight pull hub, 3 pawls
6061 Aluminum

AXLE

F: 2 in 1 (QR 15mm)
R: 3 in 1 (QR 135mm,
M12 135mm / 142mm)

COMPATIBILITY

Shimano 11S, SRAM 11S,
Exchangeable: SRAM XX1

SPOKES

F: 28 / R: 28, Stainless aero

NIPPLES

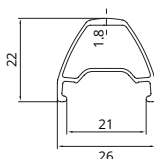
14mm alloy

LACING

F: Aero (2X) / R: Aero (2X drive / 2X)

WEIGHT

1594 grams
(Front: 715 g / Rear: 879 g)



WH-27.5 COMP

MTB XC

27.5 INCH (ETRTO: 584mm)
ALUMINUM CLINCHER WITH EYELETS

DEPTH

17.5mm / Width: 24.2mm

HUB

3 pawls
6061 Aluminum

AXLE

F: 2 in 1 (QR 15mm)
R: 3 in 1 (QR 135mm,
M12 135mm / 142mm)

COMPATIBILITY

Shimano 11S, SRAM 11S,
Exchangeable: SRAM XX1

SPOKES

F: 24 / R: 24, Stainless aero

NIPPLES

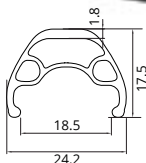
14mm alloy

LACING

F: Aero (2X) / R: Aero (2X drive / 2X)

WEIGHT

1823 grams
(Front: 848 g / Rear: 975 g)



WH-XCD 280

MTB XC

27.5 INCH (ETRTO: 584mm)
CLINCHER CARBON FIBER
TUBELESS READY CLINCHER

DEPTH

28mm / Width: 29.2mm

HUB

Straight pull hub, 3 pawls
6061 Aluminum

BEARINGS

6 sealed

COMPATIBILITY

Shimano 11S, SRAM 11S,
Exchangeable: SRAM XX1

SPOKES

F: 24 / R: 24, Sapim CX-Delta,
Straight pull, black

NIPPLES

Sapim alloy

LACING

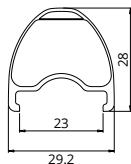
F: Aero (2X) /

R: Aero (2X drive / 2X)

WEIGHT

1535 grams

(Front: 690 g / Rear: 845 g)



WE VALUE YOUR FEEDBACK. IF YOU NEED SOMETHING WHICH YOU DID NOT FIND IN OUR EXTENSIVE PRODUCT LINE, SIMPLY LET US KNOW AND WE WILL DO OUR BEST TO ANSWER YOUR REQUESTS



HANDLEBARS

ROAD

WE HAVE A DIVERSE RANGE OF HIGH-QUALITY ROAD HANDLEBARS RANGING FROM FULL CARBON FIBER TO LIGHTWEIGHT ALUMINUM

Designed and engineered to be light and ergonomic so your hands feel comfortable even during those long rides. Ultralight carbon fiber and extra stiff aluminum gives you precise control.

HB-RC

FULL CARBON FIBER

STYLE

Aero tube style with cable cap

BAR BORE Ø

31.8mm

WIDTH

400 / 420 / 440mm

WEIGHT

240 grams (420mm)

ERGONOMIC SHAPE ALLOWS A MORE COMFORTABLE GRIP ON MULTIPLE POSITIONS ON THE HANDLEBAR



HB-RC1

FULL CARBON FIBER

STYLE

Aero tube style without cable cap

BAR BORE Ø

31.8mm

WIDTH

400 / 420 / 440mm

WEIGHT

220 grams (420mm)



HB-RC3

FULL UD CARBON FIBER

STYLE

Regular

BAR BORE Ø

31.8mm

WIDTH

400 / 420 / 440mm

WEIGHT

226 grams (420mm)



HB-RC4

FULL UD CARBON FIBER

STYLE

Round

BAR BORE Ø

31.8mm

WIDTH

400 / 420 / 440mm

WEIGHT

214 grams (420mm)



HB-RA50A

TRIPLE-BUTTED 7050 ALUMINUM

STYLE

Aero tube

DROP

127mm

REACH

75mm

BAR BORE Ø

31.8mm

WIDTH

400 / 420 / 440mm

FINISH

Sandblasted / Anodized

WEIGHT

284 grams
(420mm)

*TRIPLE-BUTTED ALUMINIUM TUBE OPTIMIZES
THE HANDLEBAR'S STRENGTH-TO-WEIGHT
RATIO*



HB-RA61

TRIPLE-BUTTED 6061 ALUMINUM

STYLE

Aero tube

DROP

125mm

REACH

75mm

BAR BORE Ø

31.8mm

WIDTH

400 / 420 /
440mm

FINISH

Sandblasted / Anodized

WEIGHT

305 grams (420mm)



HANDLEBARS

MTB

WHETHER YOUR PREFERENCE IS THE ULTRALIGHT FULL CARBON OR THE MORE TRADITIONAL EXTRA STIFF ALUMINUM, YOU CAN FIND THEM ALL HERE

MTB handlebars take a lot of pounding, and the last thing you need is a broken handlebar that cannot take the stress. That is why we place special emphasis on strength and durability when it comes to MTB handlebars.

HB-MFC

FULL 3K CARBON FIBER

BAR BORE Ø

31.8mm

BEND

9°

WIDTH

600 / 620mm

WEIGHT

135 grams (600mm)



HB-MRC

FULL 3K CARBON FIBER

BAR BORE Ø

31.8mm

UPSWEEP

6°

BEND

9°

WIDTH

680 / 700mm

WEIGHT

170 grams (680mm)



HB-MFC1

FULL 3K CARBON FIBER

STYLE
Top flat

BAR BORE Ø
31.8mm

BEND
6°

WIDTH
680 / 700mm

WEIGHT
165 grams (700mm)



HB-MRC1

FULL 3K CARBON FIBER

BAR BORE Ø
31.8mm

RISE
20mm

UPSWEEP
5°

BEND
9°

WIDTH
760 / 780mm

WEIGHT
220 grams (760mm)



HB-MFA75 (VERTEX F75)

TRIPLE-BUTTED 7075 ALUMINUM

STYLE

Vertex flat bar

BAR BORE Ø

31.8mm

BEND

6°

WIDTH

600 / 620mm

WEIGHT

165 grams (600mm)



HB-MFA751 (VERTEX F751)

TRIPLE-BUTTED 7075 ALUMINUM

STYLE

Vertex flat bar

BAR BORE Ø

31.8mm

BEND

6°

WIDTH

680 / 720mm

WEIGHT

250 grams (680mm)



HB-MRA75 (VERTEX R75)

TRIPLE-BUTTED 7075 ALUMINUM

STYLE

Vertex riser bar

BAR BORE Ø

31.8mm

RISE

20mm

UPSWEEP

3°

BEND

6°

WIDTH

680 / 700mm

WEIGHT

260 grams (680mm)



HB-FORCE F

TRIPLE-BUTTED 7075 ALUMINUM

STYLE

Top flat

BAR BORE Ø

31.8mm

BEND

6°

WIDTH

680 / 720mm

WEIGHT

250 grams (680mm)

COLORS

Black, green,
blue, red,
orange, gold

TRIPLE-BUTTED ALUMINIUM TUBE OPTIMIZES THE HANDLEBAR'S STRENGTH-TO-WEIGHT RATIO ALLOWING IT TO TAKE MORE PUNISHMENTS BUT WITH LESS WEIGHT



HB-FORCE R

TRIPLE-BUTTED 7075 ALUMINUM

STYLE

Riser bar

BAR BORE Ø

31.8mm

RISE

20mm

UPSWEEP

3°

BEND

6°

WIDTH

680 / 700mm

WEIGHT

260 grams (680mm)

COLORS

Black, green, blue, red, orange, gold



ALL OF OUR HANDLEBARS ARE BUILT TO EXACTING STANDARDS, CAPABLE OF SURVIVING NORMAL CYCLING HAZARDS ENCOUNTERED ON THE TRAIL OR ON THE ROAD

STEMS

CARBON FIBER

CAREFULLY ENGINEERED TO OFFER THE BENEFITS OF LIGHT WEIGHT WITHOUT COMPROMISING DURABILITY AND STRENGTH

PACO® thoroughly engineered every detail of all carbon fiber stems to optimize performance, strength and durability. We know how much a small change in stem length or angle can alter your position on your bike. This is why we offer stems in various extensions and angles.

ST-C51

ROAD

FULL CARBON FIBER

BAR BORE Ø

26.0 / 31.8mm

STEERER TUBE

28.6

ANGLE

-5° / +5°

EXTENSIONS

90 - 120mm

WEIGHT

135 grams (110mm)



ST-C52

ROAD

FULL CARBON FIBER

BAR BORE Ø

26.0 / 31.8mm

STEERER TUBE

1.1/8"

ANGLE

-10° / +10°

EXTENSIONS

90 - 130mm

WEIGHT

165 grams (110mm)



ST-C53

ROAD / MTB XC

3D FORGED 7050 ALUMINUM + UD CARBON

BAR BORE Ø

31.8mm

STEERER TUBE

1.1/8"

ANGLE

-6° / +6°

HEIGHT

40mm

EXTENSIONS

50 - 130mm

WEIGHT

116 grams (100mm)



ST-C61

ROAD / MTB XC

3K CARBON / 6061 ALUMINUM

BAR BORE Ø

31.8mm

STEERER TUBE

28.8mm

ANGLE

-10° / +10°

HEIGHT

38mm

EXTENSIONS

60 - 120mm

WEIGHT

162 grams (100mm)



ST-C14

ROAD / MTB XC

3K CARBON / 2014 ALUMINUM

BAR BORE Ø

31.8mm

STEERER TUBE

1.1/8"

ANGLE

-6° / +6°

HEIGHT

38mm

EXTENSIONS

60 - 120mm

WEIGHT

123 grams (100mm)



STEMS

ALUMINUM

MODERN ALUMINUM STEMS, OPTIMIZED TO GIVE MAXIMUM LEVEL OF PERFORMANCE. IN A WIDE VARIETY OF EXTENSIONS AND ANGLES

Similar to our carbon fiber stems, we thoroughly engineered every detail of our aluminum stems. Perfectly welded and finished. Each stem is designed to provide maximum safety and comfort to riders no matter the age, body dimensions or riding skill level.

ST-A14

ROAD / MTB XC

2014 ALUMINUM

BAR BORE Ø
31.8mm

STEERER TUBE
1.1/8"

ANGLE
-6° / +6°

HEIGHT
38mm

EXTENSIONS
60 - 120mm

WEIGHT
105 grams (100mm)



ST-FORCE

ROAD / MTB XC

2014 ALUMINUM

BAR BORE Ø
31.8mm

STEERER TUBE
1.1/8"

ANGLE
-6° / +6°

HEIGHT
38mm

EXTENSIONS
60 - 120mm

WEIGHT
105 grams (100mm)



ST-A61J

ROAD / MTB XC

6061 ALUMINUM

BAR BORE Ø

31.8mm

STEERER TUBE

1.1/8"

ANGLE

Adjustable, 2 sizes in 1 stem

HEIGHT

39mm

EXTENSIONS

60 - 110mm

WEIGHT

161 grams (80 / 90mm)

*ADJUSTABLE TO 2 ANGLES ELIMINATES
THE NEED TO CHANGE STEMS JUST TO
CHANGE THE STEP ANGLE*



ST-A61

ROAD / MTB XC

6061 ALUMINUM

BAR BORE Ø

31.8mm

STEERER TUBE

1.1/8"

ANGLE

-10° / +10°

HEIGHT

38mm

EXTENSIONS

60 - 120mm

WEIGHT

162 grams (100mm)



ST-A51

ROAD / MTB XC

3D FORGED 7050 ALUMINUM

BAR BORE Ø

31.8mm

STEERER TUBE

1.1/8"

ANGLE

-6° / +6°

HEIGHT

40mm

EXTENSIONS

50 - 130mm

WEIGHT

108 grams (90mm)



ST-A52

ROAD / MTB XC

3D FORGED 6061 ALUMINUM

BAR BORE Ø

31.8mm

STEERER TUBE

1.1/8"

ANGLE

-7° / +7°

HEIGHT

45mm

EXTENSIONS

50 - 130mm

WEIGHT

165 grams (90mm)



ST-A53

ROAD / MTB XC

3D FORGED 6061 ALUMINUM

BAR BORE Ø

31.8mm

STEERER TUBE

1.1/8"

ANGLE

-7° / +7°, -17° / +17°

HEIGHT

40mm

EXTENSIONS

50 - 130mm,

-17° / +17° available from 80 - 130mm

WEIGHT

152 grams (100mm)



ONE OF THE BIGGEST THINGS YOU WILL NOTICE WHEN YOU WORK WITH US IS THAT WE TREAT OUR CUSTOMERS MORE THAN JUST A DUMPING GROUND FOR OUR PRODUCTS. WE ARE NOT MERELY SELLING PRODUCTS BUT MORE IMPORTANTLY, WE ARE PROMOTING THE SPORTS OF CYCLING. TO ACHIEVE THIS MISSION WE TREAT OUR CUSTOMERS AS VALUED PARTNERS



SEATPOSTS

CARBON FIBER

THESE ARE CRUCIAL TO CYCLING COMFORT AND SAFETY. MADE FOR ROAD AND MOUNTAIN BIKES. DURABLE ENOUGH SO YOU DON'T HAVE TO WORRY ABOUT IT

Due to the different bicycle frame sizes and geometries, **PACO®** has the 3 most common diameters available. So, most likely, we have a seatpost which fits your particular requirements.

SP-RC2BT

ROAD / MTB XC

FULL 3K CARBON TUBE, CNC-MACHINED ALLOY CLAMP

CLAMP

Two-bolt micro-adjustment

DIAMETER

27.2 / 30.9 / 31.6mm

OFFSET

0mm

LENGTH

400mm

WEIGHT

258 grams (Ø 31.6)

*TWO-BOLT MICRO-ADJUST
ALLOWS A QUICK, EASY AND
PRECISE ADJUSTMENT OF
THE SADDLE'S ANGLE*



SP-RC4

ROAD / MTB XC

FULL 3K CARBON TUBE, CNC-MACHINED ALLOY CLAMP

CLAMP

Two-bolt micro-adjustment

DIAMETER

27.2 / 30.9 / 31.6mm

OFFSET

30mm

LENGTH

400mm

WEIGHT

200 grams (Ø 31.6)



SP-RC5

ROAD / MTB XC

FULL 3K CARBON TUBE, CNC-MACHINED ALLOY CLAMP

CLAMP

Two-bolt micro-adjustment

DIAMETER

27.2 / 30.9 / 31.6mm

OFFSET

0mm

LENGTH

400mm

WEIGHT

258 grams (Ø 31.6)



SEATPOSTS

ALUMINUM

WHEN YOU'RE LOOKING FOR THE ULTIMATE STIFFNESS WITH A GREAT STRENGTH TO WEIGHT RATIO, THESE SEATPOSTS ARE SECOND TO NONE

These **PACO®** aluminum seatposts are a few grams heavier than our carbon fiber seatposts, but these alloy seatposts are also ultra-stiff, durable and offer the classic strength that gives you peace of mind when riding.

SP-A752BT

ROAD / MTB XC

7075 ALUMINUM

CLAMP

Two-bolt micro-adjustment

DIAMETER

27.2 / 30.9 / 31.6mm

OFFSET

0mm

LENGTH

400mm

WEIGHT

284 grams (Ø 31.6)

*TWO-BOLT MICRO-ADJUST
ALLOWS A QUICK, EASY AND
PRECISE ADJUSTMENT OF THE
SADDLE'S ANGLE*

SP-FORCE

ROAD / MTB XC

7075 ALUMINUM

CLAMP

Two-bolt micro-adjustment

DIAMETER

27.2 / 30.9 / 31.6mm

OFFSET

0mm

LENGTH

400mm

WEIGHT

284 grams (Ø 31.6)



SP-A61FC

ROAD / MTB XC

6061 ALUMINUM

CLAMP

Forged head

DIAMETER

27.2 / 30.9 / 31.6mm

OFFSET

10mm

LENGTH

400mm

WEIGHT

311 grams (Ø 31.6)



SP-RA51

ROAD / MTB XC

6061 ALUMINUM

CLAMP

Forged head

DIAMETER

27.2 / 30.9 / 31.6mm

OFFSET

16.7mm

LENGTH

400mm

WEIGHT

300 grams (Ø 27.2)



SP-RA52

ROAD / MTB XC

2014 ALUMINUM

CLAMP

Forged head

DIAMETER

27.2 / 30.9 / 31.6mm

OFFSET

18mm

LENGTH

400mm

WEIGHT

267 grams (Ø 27.2)



HEADSETS

ALUMINUM

THESE HEADSETS ARE CONSTRUCTED OUT OF DURABLE ALLOY, WITH HIGH-GRADE SEALED BEARINGS FOR YEARS OF PROBLEM-FREE SERVICE

PACO® aluminum headsets are meticulously constructed to fit many types of bicycles. Super smooth and long-lasting high-quality bearings. Possible to order in several different colors to match almost any bicycle color.

HS-MA44

ALLOY TOP COVER AND CUPS

STYLE

Semi-integrated

HEADTUBE ID Ø

44mm

BEARINGS

1.1/8" - 41.0mm

41° x 45° sealed bearings

HEIGHT

12.6mm

WEIGHT

77 grams

COLOR

Black/ Red/ Blue/ Gold/ Ti / Green



HS-MA55

ALLOY TOP COVER AND CUPS

STYLE

Semi-integrated tapered

HEADTUBE ID Ø

44 / 55mm

BEARINGS

1.1/8" - 41.0mm

1.5" - 52mm

41° x 45° or 52° x 45° sealed bearings

HEIGHT

12.4mm

WEIGHT

100 grams

COLOR

Black/ Red/ Blue/ Gold/ Ti / Green



HS-RA52

ALLOY TOP COVER AND CUPS

STYLE

Integrated tapered

HEADTUBE ID Ø

41.8 / 51.8 or 42 / 52mm

BEARINGS

1.1/8" - 41.8mm

1.5" - 51.8mm

45° x 45° sealed bearings

HEIGHT

10mm

WEIGHT

74 grams

COLOR

Black/ Red/ Blue/ Gold/ Ti / Green



HS-RA61

ALLOY TOP COVER AND CUPS

STYLE

Integrated tapered

HEADTUBE ID Ø

41.8 / 51.8mm

BEARINGS

1.1/8" - 41.8mm

1.5" - 51.8mm

45° x 45° sealed bearings
(Alloy cone)

HEIGHT

10.2mm

WEIGHT

66 grams

COLOR

Red/ Blue/ Gold/ Ti / Green



SEAT CLAMPS

ALUMINUM

*SLIP-FREE SEAT CLAMPS DOES ITS JOB EFFICIENTLY AND EFFECTIVELY.
EXTRA LIGHT YET ALSO EXTRA DURABLE.*

Usually it's the small, often overlook things that makes a ride enjoyable. Our seat clamps are made to the exacting standards as our other products. Won't slip even when wet. Our quick release levers are finely tuned with a shape that won't hurt your hands.

SC-M1

6061 T6 ALUMINUM

STYLE

Quick-lift quick-release lever

DIAMETER

28.6 / 31.8 / 34.9mm

HEIGHT

13mm

WEIGHT

47 grams (Ø 34.9)

FINISH

Polished / anodized

COLOR

Black / Red / Blue / Gold / Ti / Green



**ERGONOMIC
QUICK-LIFT LEVER**

SC-M2

CNC-MACHINED 6061 T6 ALUMINUM

STYLE

Screw-on double bolt

DIAMETER

31.8 / 34.9mm

HEIGHT

21mm

WEIGHT

36 grams (Ø 34.9)

FINISH

Polished / anodized

COLOR

Black / Red / Blue / Gold / Ti / Green



SC-ANP

6061 T6 ALUMINUM

STYLE
Screw-on single bolt

DIAMETER
31.8 / 34.9mm

HEIGHT
13mm

WEIGHT
25.8 grams (Ø 31.8)

FINISH
Polished / anodized

COLOR
Black / Red / Blue / Gold / Ti / Green



SC-R1

6061 T6 ALUMINUM

STYLE
Screw-on single bolt

DIAMETER
31.8 / 34.9mm

HEIGHT
17mm

WEIGHT
22.7 grams (Ø 31.8)

FINISH
Polished / anodized

COLOR
Black / Red / Blue / Gold / Ti / Green



SC-R2

6061 T6 ALUMINUM

STYLE

Screw-on single bolt

DIAMETER

31.8 / 34.9mm

HEIGHT

13mm

WEIGHT

21 grams (Ø 34.9)

FINISH

Sandblasted / anodized

COLOR

Black / Red / Blue / Gold / Ti / Green



SC-R3

FORGED 6061 T6 ALUMINUM

STYLE

Screw-on single bolt

DIAMETER

31.8 / 34.9mm

HEIGHT

12.5mm

WEIGHT

22.8 grams (Ø 31.8)

FINISH

Sandblasted / anodized

COLOR

Black / Red / Blue / Gold / Ti / Green



**WE ARE CONTINUALLY UPGRADING OUR PRODUCT LINE. EXPECT OUR
PRODUCT LINE AND SALES PROGRAM TO BECOME SIGNIFICANTLY
BETTER BOTH IN QUALITY AND QUANTITY EVERY YEAR.**



BOTTLE CAGES

CARBON FIBER

OUR BOTTLE CAGES ARE UNIQUELY DESIGNED FOR EASY BOTTLE PLACEMENT AND RETENTION. IN CARBON FIBER AND ALUMINUM

Lost water bottles are the result of poor bottle cage design. These bottle cages are made and tested to retain your water bottle even in the roughest terrain. Conversely, it's made so that putting in and taking off your water bottle is quick and easy. So you rehydrate more often.

BC-51

FULL 3K OR UD CARBON FIBER

WEIGHT
27 grams



BC-52

FULL 3K OR UD CARBON FIBER

WEIGHT
22 grams



BC-53

FULL 3K OR UD CARBON FIBER

WEIGHT

19 grams



UNIQUE DESIGN ALLOWS YOU TO TAKE AND PLACE YOUR WATER BOTTLE FROM THE SIDE. USEFUL FOR WHEN YOU HAVE A LOW TOP TUBE OR ACCESS FROM THE TOP IS LIMITED.



BOTTLE CAGES

ALUMINUM

DESIGNED TO BE ABSOLUTELY LIGHT SO IT DOESN'T WEIGH DOWN YOUR BIKE. COMES IN SEVERAL COLORS AND FINISHES TO MATCH BIKES IN ANY COLOR OR FINISH

BC-A02

6061 ALUMINUM

WEIGHT

27 grams

FINISH

Sandblasted / anodized

COLOR

Black / Red / Blue / Gold / Ti



BC-A03

6061 ALUMINUM

WEIGHT

27 grams

FINISH

Painted

COLOR

Shiny Black / White / Red / Blue / Yellow



BC-A04

6061 ALUMINUM

WEIGHT
27 grams

FINISH
Painted

COLOR
Matte Black / White / Red / Blue / Yellow



***NOW MORE CHOICES THAN EVER COVERING
ALL TYPES OF BICYCLE AESTHETICS AND
RIDER'S TASTE***

***WE ARE BICYCLISTS OURSELVES SO WE KNOW THE FUN, EXCITEMENT
AS WELL AS THE CHALLENGES FACING THE AVERAGE BICYCLIST,
AND OUR PRODUCTS REFLECT THIS FACT: FUNCTIONAL, HIGH-
PERFORMANCE AND EXCELLENT NO-NONSENSE QUALITY***

DERAILLEUR PULLEYS

ALUMINUM

**MADE OF EXTRA STRONG 7075 ALUMINUM WITH SEALED BEARING.
CONSTRUCTED TO KEEP ON ROLLING. IN SEVERAL FLASHY COLORS**

7075 aluminum allows our pulley to last a lot longer than stock pulleys. No premature wear. Sealed bearings prevent dust, dirt, water and other undesirable things from messing with the internal workings of these pulleys allowing kilometers of problem-free and maintenance-free operation.

PY-017

7075 ALUMINUM

BEARING

High-quality sealed

TEETH

11T

COMPATIBILITY

Shimano 9, 10 and 11-speed
(except RD-7900 and 7970)
Campagnolo 11-speed

FINISH

Sandblasted / anodized

COLOR

Black / Red / Blue / Gold / Orange / Green



PY-037

7075 ALUMINUM

BEARING

High-quality sealed

TEETH

11T

COMPATIBILITY

Shimano 9, 10 and 11-speed
(except RD-7900 and 7970)
Campagnolo 11-speed

FINISH

Sandblasted / anodized

COLOR

Black / Red / Blue / Gold / Orange / Green

**EXTRA STIFF 7075 ALUMINUM
FOR FAST SHIFTING**



2017



PACO®

PACO BIKE CO., LTD.

80, Yuanlu Rd., Yuanlin,
Changhua County 510, Taiwan

TEL 886-4-838-4342

FAX 886-4-838-0736

paco@paco-bike.com

FOR THE LATEST NEWS AND PRODUCTS, VISIT OUR WEB SITE AT

WWW.PACO-BIKE.COM